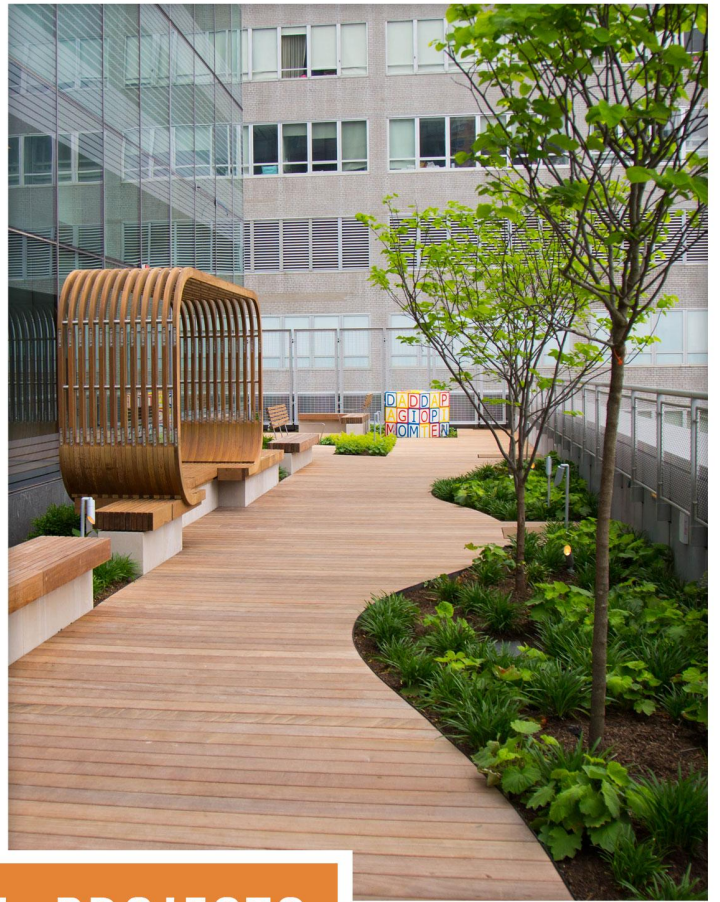
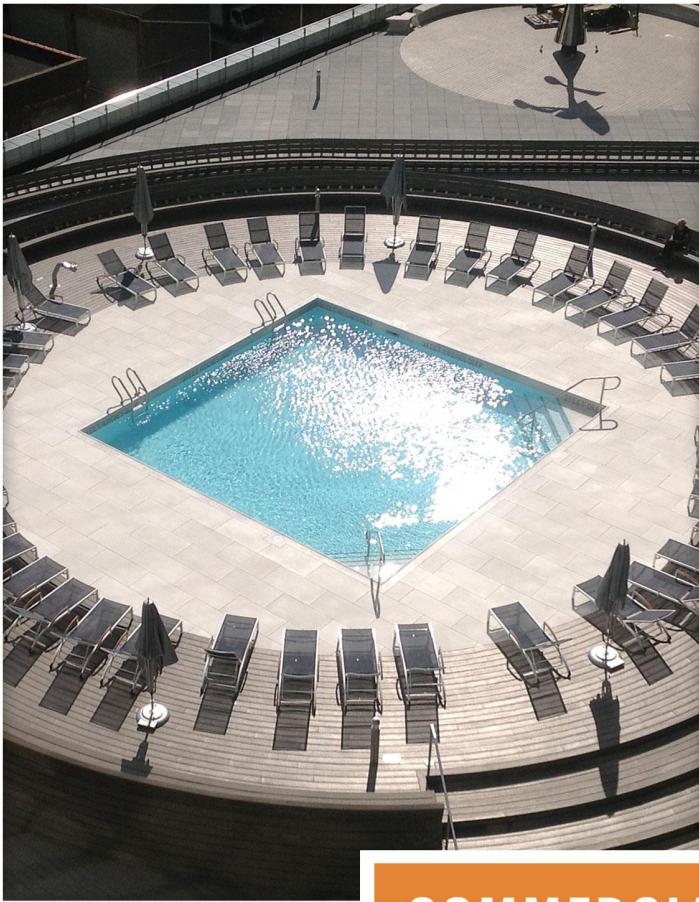




NEWYORKDECKS

We Deck New York.

www.NewYorkDecks.com



COMMERCIAL PROJECTS



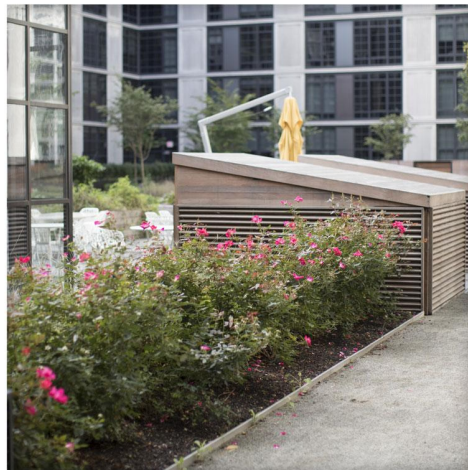
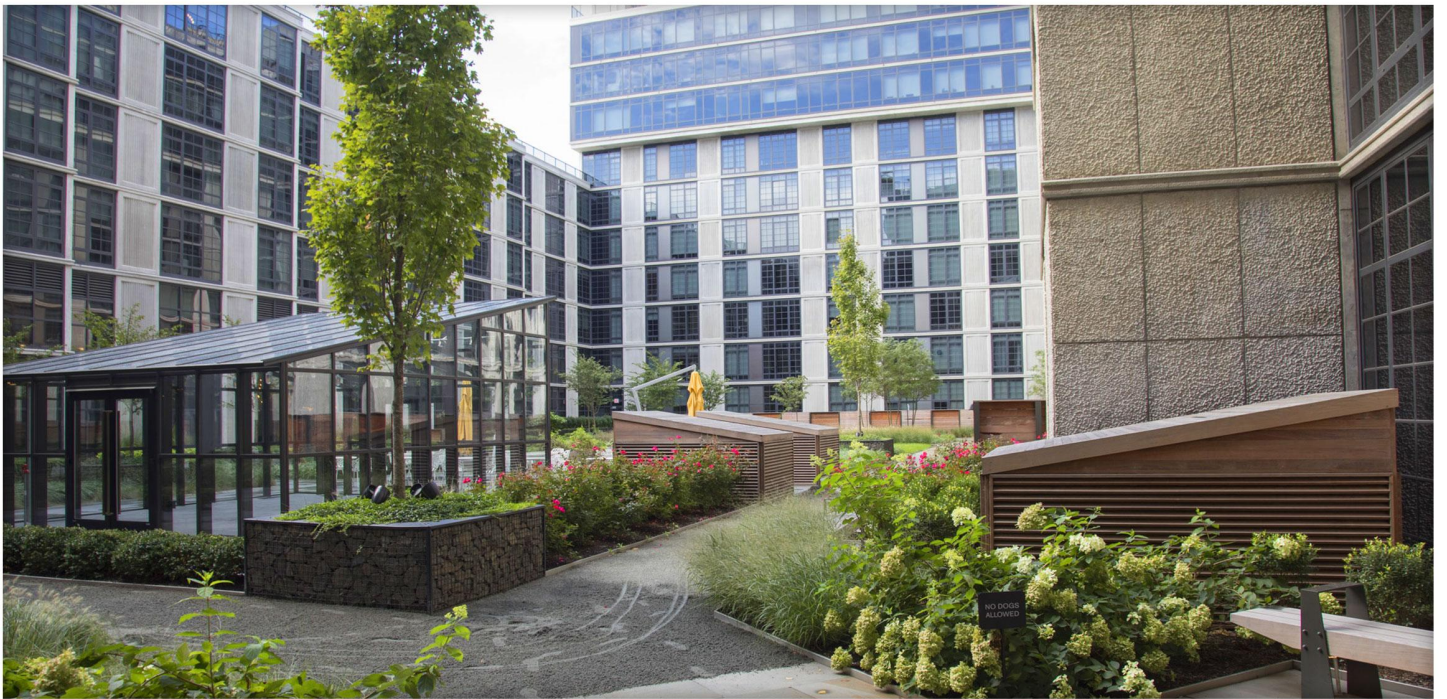


About Us

When we say “We deck New York,” we mean what we say. Working in the most challenging of neighborhoods and environments this massive metro area presents, our talented team applies expertise, skill, and creativity to deliver professional, noteworthy results on every project. More than 600 decks to our credit since 1996, we have worked for individuals, corporations, developers, landscape architects, and business owners, working diligently to listen, understand, and create a project that exceeds every expectation.

Craftsmanship and service are built into our plans every step of the way. Stepping outside the building as well as outside the box, we incorporate deck furnishings, finishes, fencing, pergolas, planters, terraces, outdoor kitchens, and custom pieces that embrace the outdoors in ways you never thought possible.

Scan through our projects to see that our word carries through to the finished product and beyond, covering design, build, and maintenance to ensure your New York Decks project gives you years of enjoyment and pleasure.

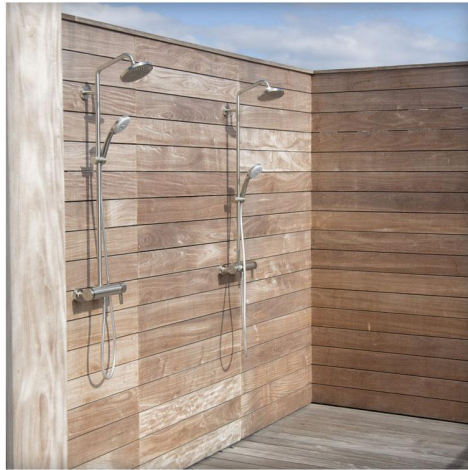


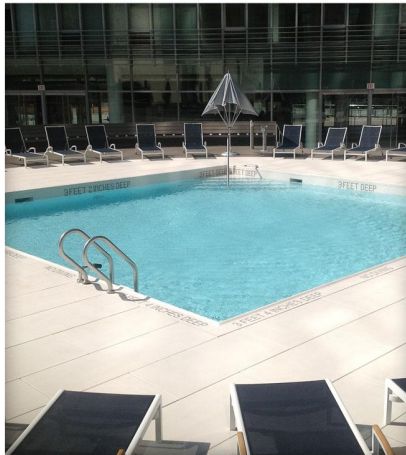
The Arc - 39th Ave. LIC

We installed all the exterior hardwood features at this new block-sized luxury development in Queens. Decking, pergola, fencing, heavy beam benches and privacy partitions. Sheds and decorative vent enclosures, planters.



The Arc - 39th Ave. LIC

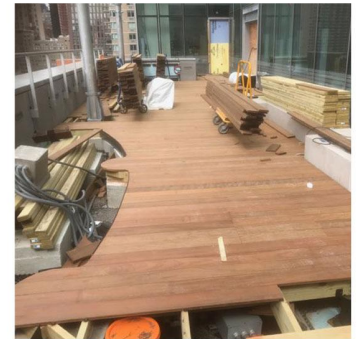
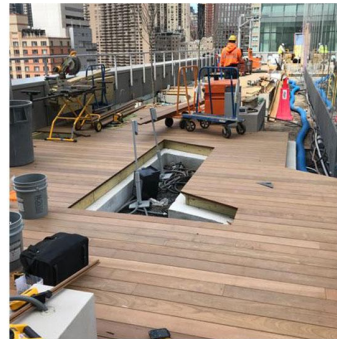
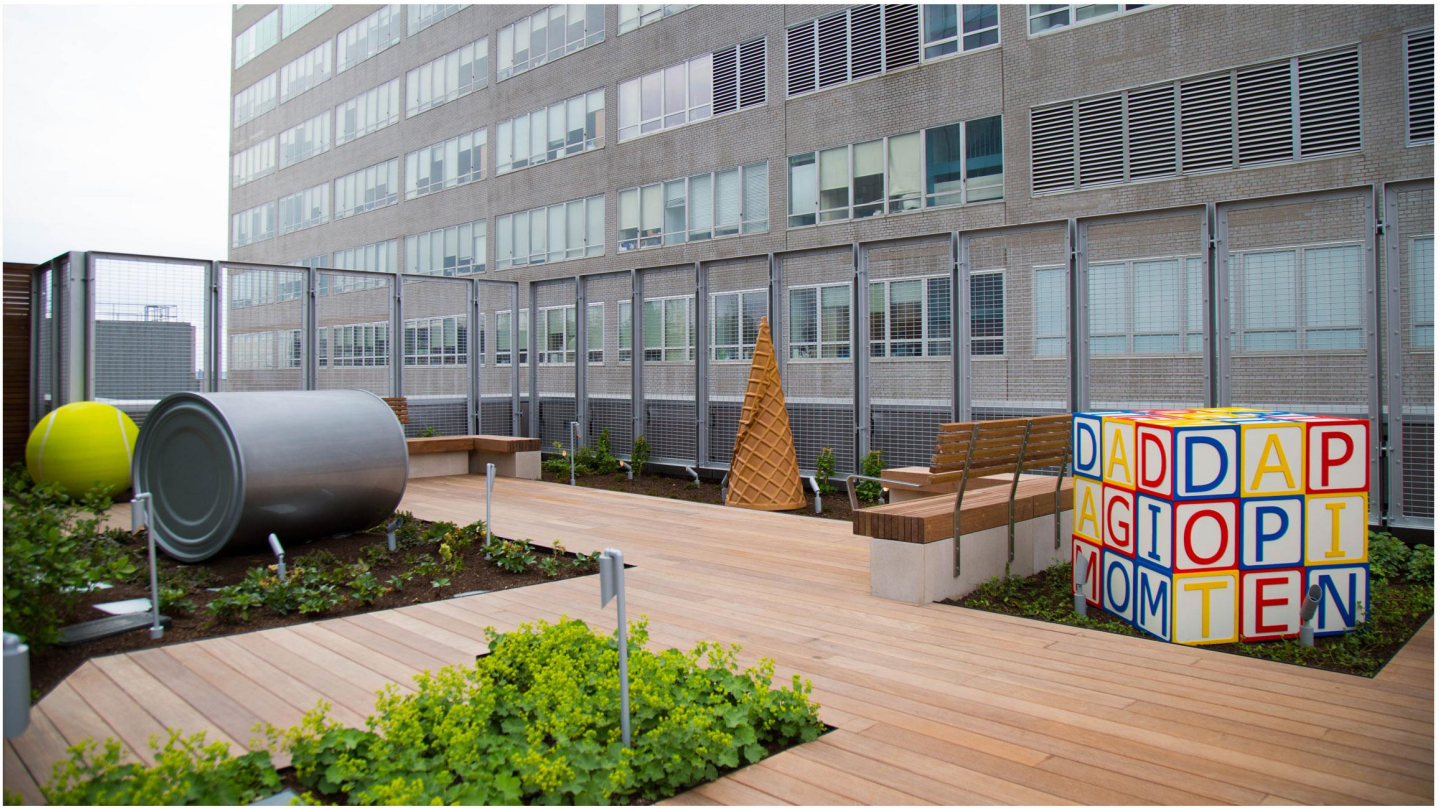




Mercedes House

We built the award winning circular elevated pool deck at the Mercedes House. Presented with simple line drawings that outlined the basic shape of the project, it fell to us to engineer the entire support structure based on our knowledge of deck construction and AI's extensive experience in boat building. The project is composed of over 2000 composite deck planks, each one curved by our team using a specialized thermal bending machine; the internal structure that we designed is light gauge steel.

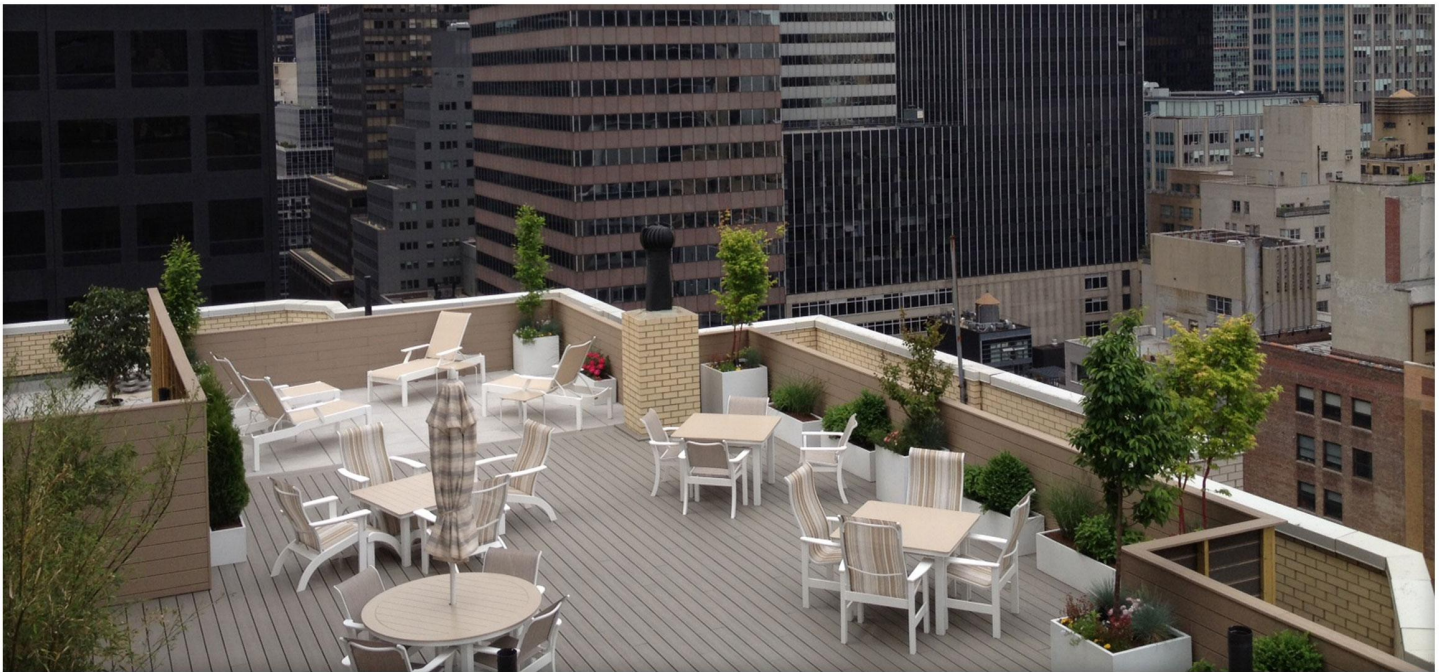
Two Trees were the developer/GC for the project



NYU | Kimmel Pavillion

We were contracted in to handle the Ipe work on this project rooftop – the 25,000SF rooftop was divided into two sections, staff and visitor section on the east side overlooking the east river and the pediatrics on the east side then

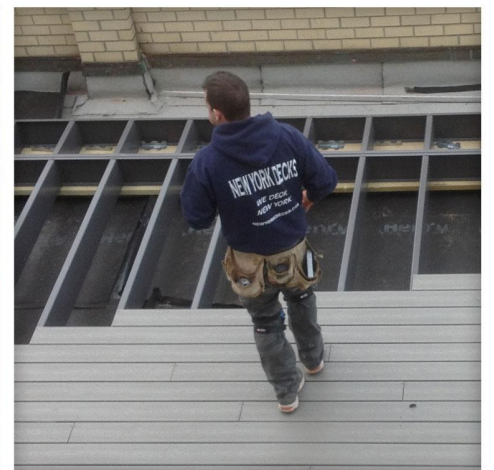
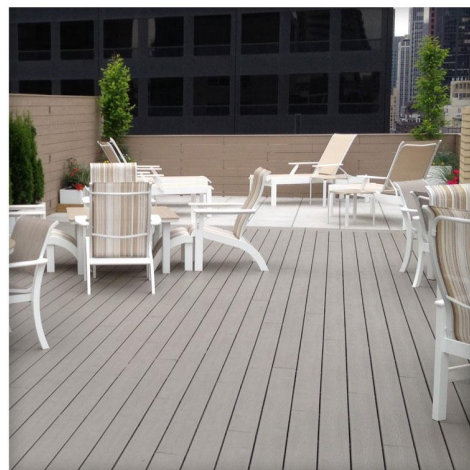
Ennead & NBBJ were architects of record and Turner were the GC

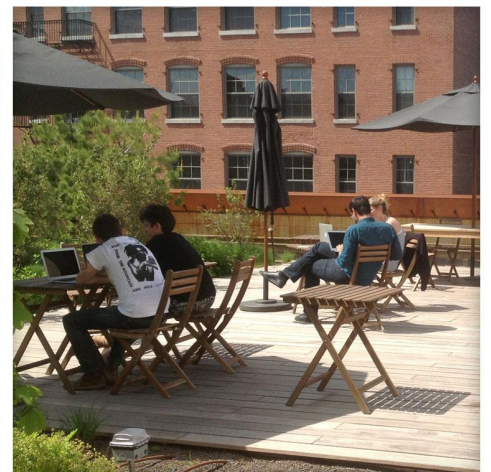
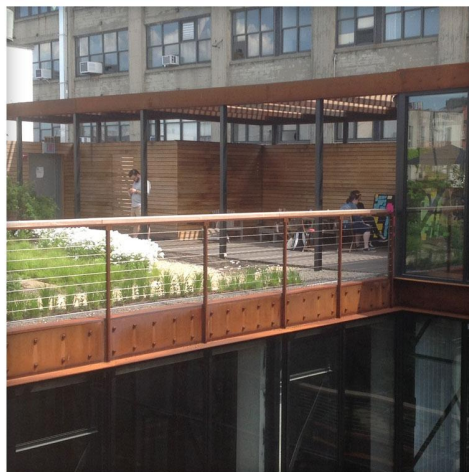
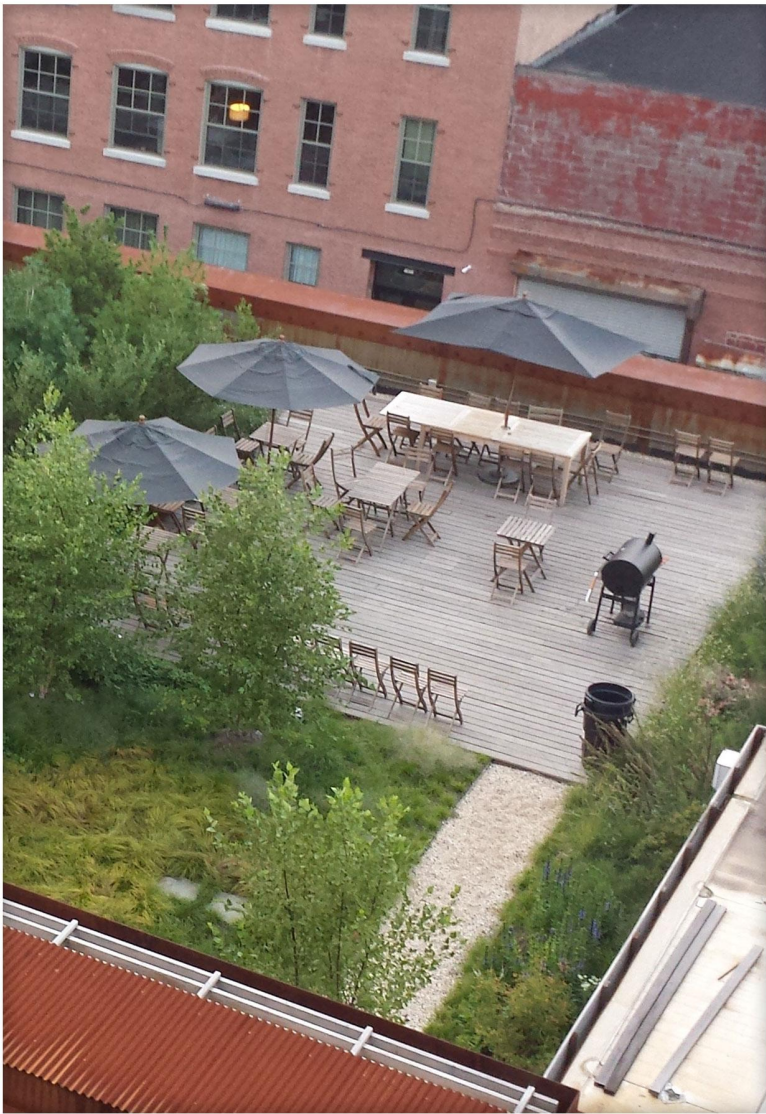


200 East 57th

Roof conversion for Manhattan HQ and communal areas – ranging 4-6k SF

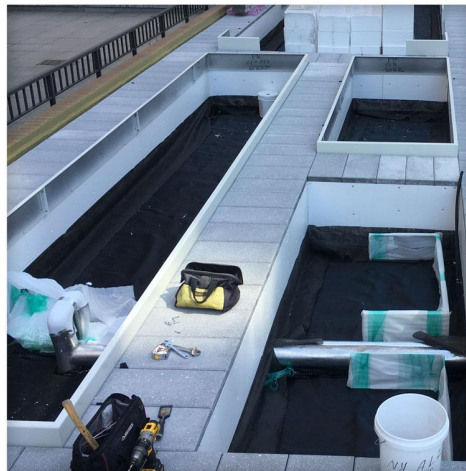
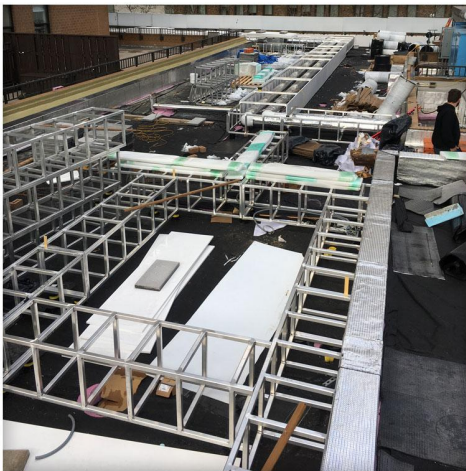
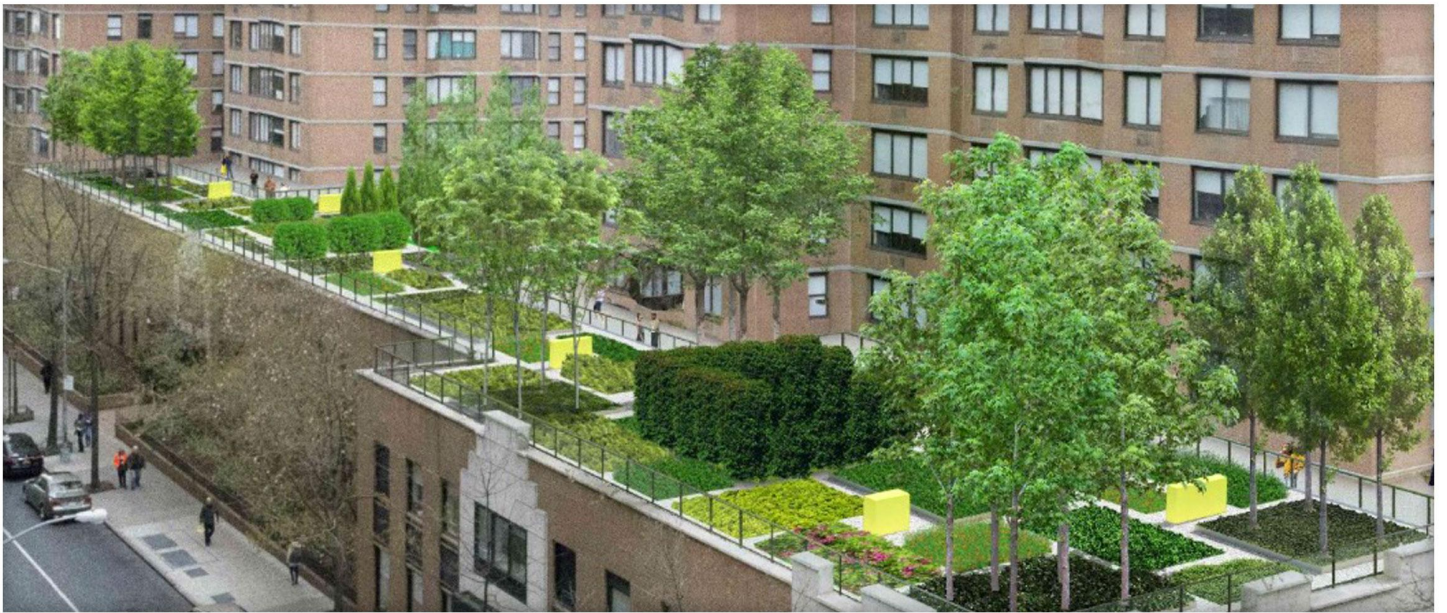
We have done countless jobs of this size using various material and framing systems.





Kickstarter - 58 Kent Street Williamsburg

Cumaru Decking | Cedar Fencing
| Cedar Benches | Railings

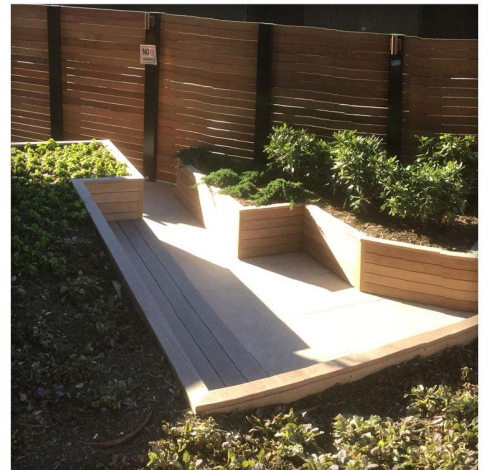
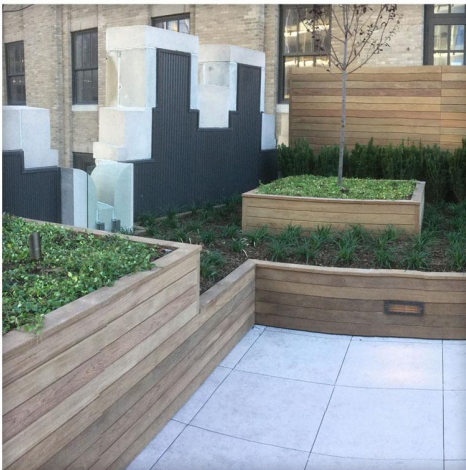
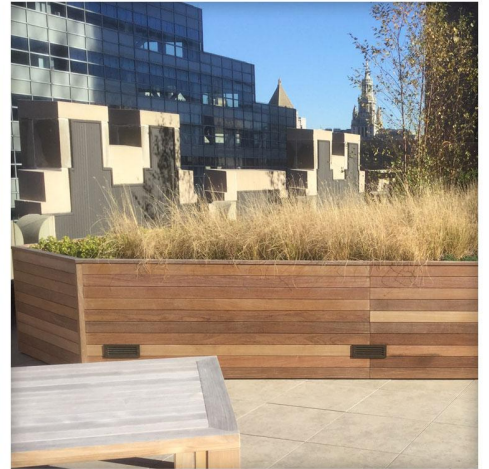
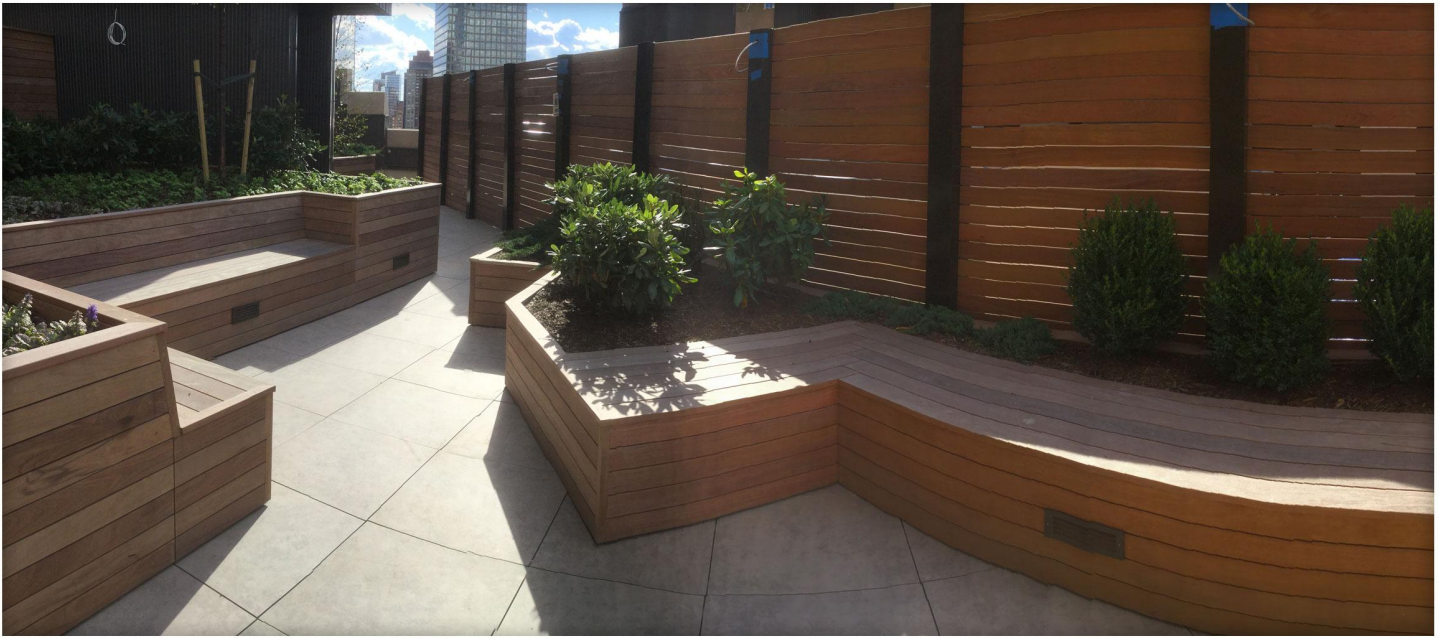


Ogden Capital

We were brought into this to help the design the undercarriage system and expedite the schedule while keeping within the budget.

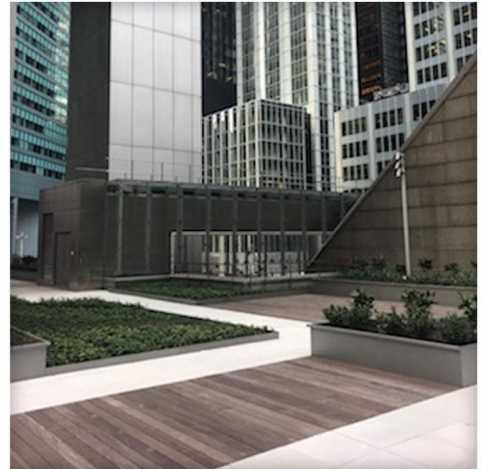
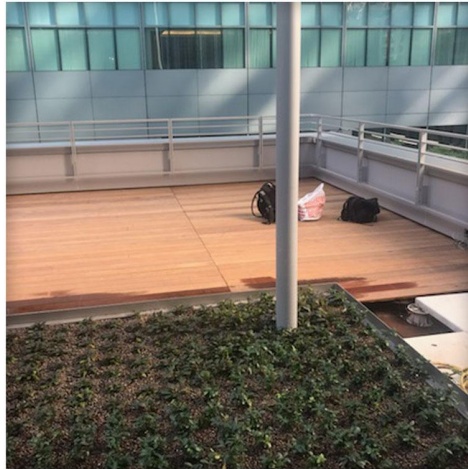
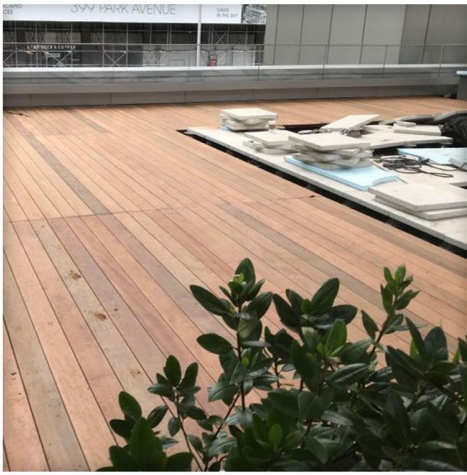
Originally the plan was the run 8" CIP concrete curbs 30" tall throughout the rooftop and doweled into the new roofing system nearly 30,000 times so we came up with a unique surface resting system comprising modular aluminum frames that will both support the paver walkways while structurally retaining the planters and the soil.

Zimmerman were the architects and JT Magen were the GC



140 West Street Common Terraces

Magnum were the developer and
JT Magen were the GC

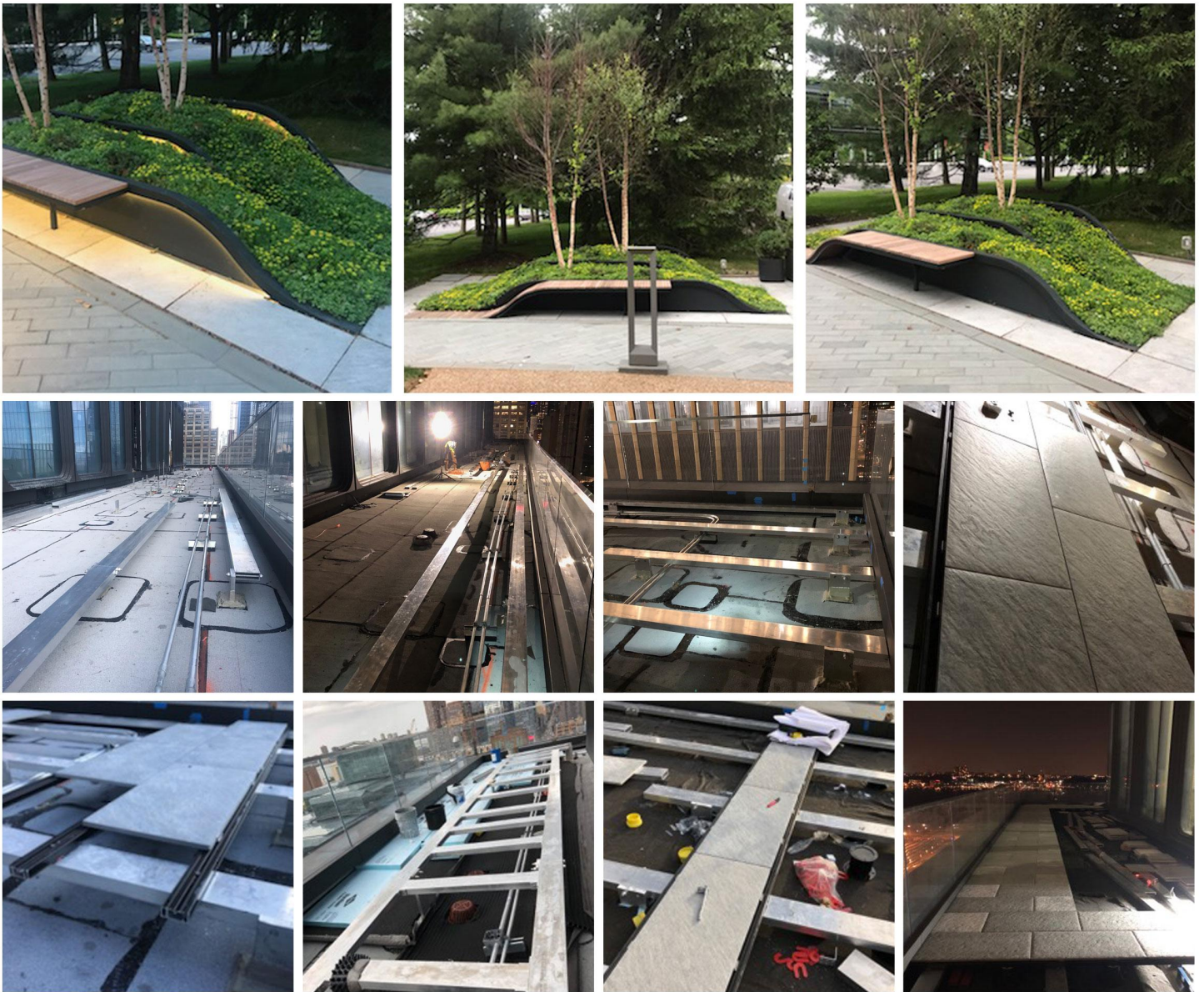


601 Lexington CitiCorp Building

We were contracted to install (6) Ipe deck platforms throughout the 2nd & 3rd levels for the new redevelopment.

We didn't have any dealings with them but Gensler are the architects of record

Turner were the GC on the job.

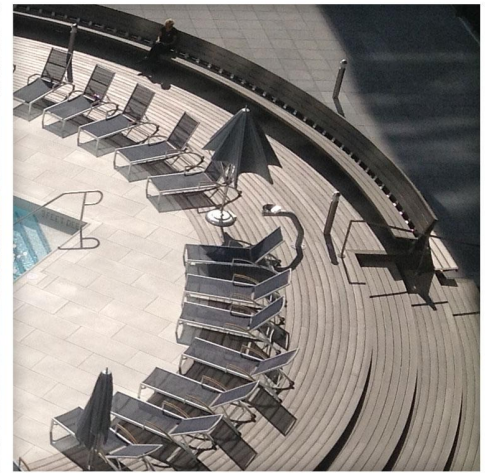
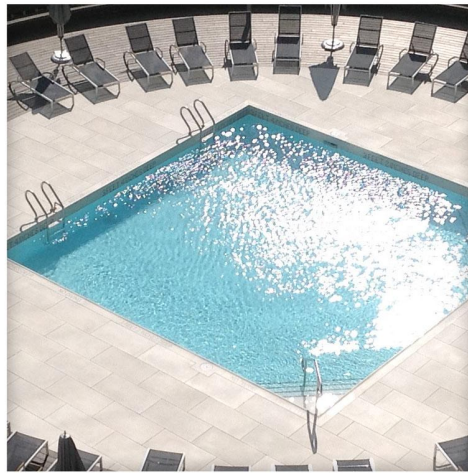
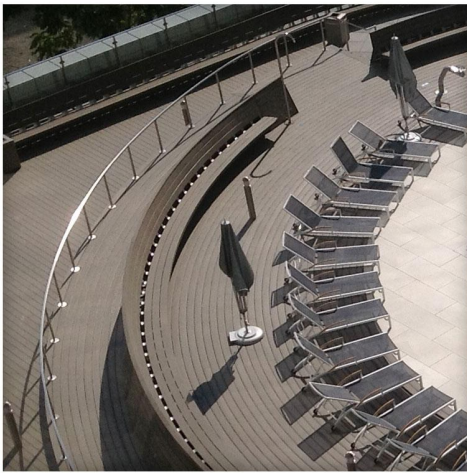


Hudson Yards

We are currently in contract and working on a 12,000 SF commercial high-end project over at Hudson Yards.

Its an engineered terrace based on a look ahead regarding global warming and the potential weather conditions that may hit the NYC region in the next 10-20 years, designed to withstand 85lbs/sf of wind uplift force.

Its pretty remarkable, the engineering gone into it, which we contributed to with our expertise.



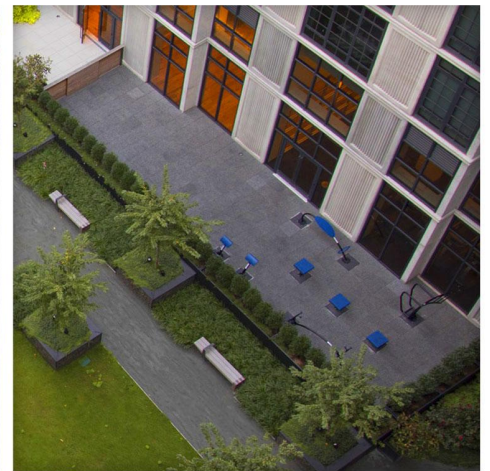
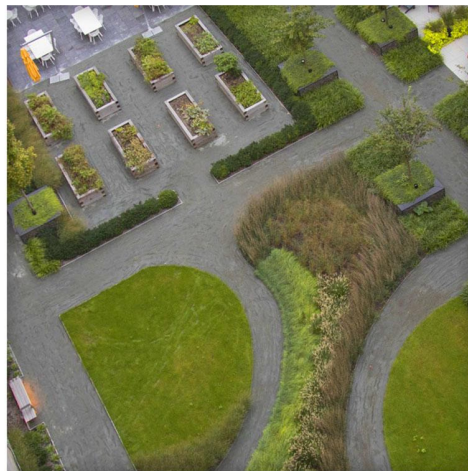
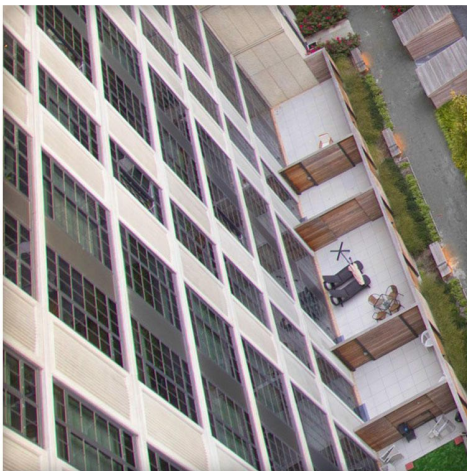
Contact Us

Phone: 718.855.1056

Fax: 718.596.1620

Email: Admin@NewYorkDecks.com

Website: www.NewYorkDecks.com



Address

New York Decks
Brooklyn Navy Yard
63 Flushing Ave
Unit 120, Suite 213
Brooklyn, NY 11205